



**WORLD'S BEST
ALLOY BULLBARS**

East Coast Bullbars (ECB Pty Ltd)

Tel: 07 3897 5700

Fax: 07 3283 1168

ecb@ecb.com.au www.ecb.com.au

29 Snook St
Clontarf QLD 4019
Australia

Po Box 122
Margate QLD 4019
Australia

BT101SY

REPLACES: 01.10.04

REVISED: 17.01.18

FITTING INSTRUCTIONS

LANDCRUISER 100 SERIES LIVE COIL BIG TUBE VEHICLE FRONTAL PROTECTION SYSTEM (VFPS) FOR AIR BAG & ADR COMPLIANT VEHICLES

Check installation hardware before commencing.

NOTE: Ensure any exposed ends of infill trim are sealed with silicone or similar to prevent corrosion.

1. Lift Bonnet. Remove grille, three PK screw at top and two plastic clips at bottom. Remove bumper cover. Three plastic clips behind bottom of grille area, **See figure 1**, one 10mm head PK screw (each side at top of bumper side returns and four to six 10mm head bolts, depending on model) along bottom of bumper. Disconnect original bumper lights as removing.
2. Remove foam form bumper sub-frame to access sub-frame bolts.
3. Remove bumper sub-frame (all models) and sub frame chassis brackets (depending on model).
4. Remove tow hooks.
5. Bend bumper cover locating tab under headlight downwards (98-9/02 models only)
6. Remove indicators from vehicle, one PK self-tapper at top of indicators (under bonnet). Splice ECB indicator wiring to original indicator wiring. Splice ECB park light wiring to original park light wiring. Refit original indicators.
7. Attach steel mounts (supplied) to chassis. Use M12 x 35 x 1.25 high tensile bolts (supplied) for top holes. Re-attach tow hooks over mounts using original bolts. Use M12 x 35 x 1.25 high tensile bolts (supplied) for lower rear holes. Use ½ x 1 ½ bolt, nut and washers for round hole in side of mount. Use original bolts for slot hole in side of mounts. **FINGER TIGHTEN ALL BOLTS ONLY. See figures 2 and 3.**
8. Attach infill trim (supplied) to top sides of ECB protection bar. NOTE: Trim 30mm off lower edge so trim will sit over end of protection bar. **See figures 4 and 5.** Trim excess off end to follow protection bar. **See figure 6.** NOTE: Seal any exposed edges of trim with silicone or similar to avoid corrosion of inner steel.
9. Fit ECB LED indicator / park lights (supplied) into protection bar as per instructions supplied with the LED indicator kit. **NOTE: Ensure park light is to outside. See figure 7.**
10. Attach ECB fog lights to protection bar. Place M6 x 20 bolts, spring washers (supplied) through light mount from inside and attach nut to top. Slide assembly into light mount in Protection bar and centralize light to hole. **TIGHTEN FIRM ONLY. See figure 8.** Fit ECB fog light trims (supplied) to protection bar. **NOTE: Wider port of rim faces to centre.**
11. Attach round cut out surrounds (supplied) into the round cut outs on the front of the protection bar. **NOTE: Wider part of trim faces to bottom side of cut out.**
12. Attach protection bar to the outside of the steel mounts. Use ½ x 1 ½ unc bolts and nuts/washers (supplied). **FINGER TIGHTEN ONLY.**



**WORLD'S BEST
ALLOY BULLBARS**

East Coast Bullbars (ECB Pty Ltd)

Tel: 07 3897 5700

Fax: 07 3283 1168

ecb@ecb.com.au www.ecb.com.au

29 Snook St
Clontarf QLD 4019
Australia

Po Box 122
Margate QLD 4019
Australia

13. **TIGHTEN STEEL MOUNTS TO CHASSIS.** Align protection with vehicle. Adjust on slot holes for protection bar to sit neatly around grille and headlight under panels.
14. Adjust at side returns so protection bar infill trim just makes contact with vehicle guards. **See figure 9.**
15. **TIGHTEN PROTECTION BAR BOLTS/NUTS** to force of 130 N-m (100ft/lb).
16. Connect ECB indicator/park lights and ECB fog lamps. **CHECK OPERATION.**
17. **NOTE:** Cut original fog lamp socket from original wiring. Use connectors supplied with ECB Fog lamps.
18. Aim fog lights just below low beam and **TIGHTEN** all fog light bolts.

ENSURE NUMBER PLATE IS CLEARLY VISABLE

Note: When fitting/refitting the licence plate to the vehicle, ensure there is no obstruction to licence plate vision in accordance with local authorities. If required relocate licence plate to an alternate location.

Further VFPS Notes:

- a) Do not attach VFPS to the vehicle using anchorages not intended for this purpose (e.g. engine mounting bolts).
- b) Do not use this product for any vehicle make or model, other than those specified by the VFPS manufacturer.
- c) Do not remove the plaque or label from the VFPS.
- d) Do not modify the structure of the VFPS in any way.
- e) No accessory or fitment should project forward of the VFPS forward profile.
- f) **ENSURE THESE INSTRUCTIONS ARE LEFT WITH VEHICLE OWNER AND/OR OPERATOR.**

IMPORTANT INFORMATION

Periodically check bolts and nuts for correct tightness, especially if travelling on rough roads

FITTING KIT

| | |
|---------------------------------|-------------------------------------------------------|
| 2 – Steel mounting brackets. | 1 – ECB LED Indicator / Park light kit |
| 8 – ½ x 1 ½ unc bolts/nuts. | 1 – Pair ECB Fog lamps. |
| 4 – M12 x 35 x 1.25 bolts only. | 2 – Fog lamp surrounds. |
| 20 – ½ flat washers. | 10 – Cable locks. |
| 12 – ½ spring washers. | 1 – 2500mm length black infill trim. |
| 2 – M6 x 20 bolts. | 2 – Round cut out surrounds (same as fog light trims) |
| 2 – M6 nuts and spring washers | |
| 4 – M6 flat washers. | |



**WORLD'S BEST
ALLOY BULLBARS**

East Coast Bullbars (ECB Pty Ltd)

Tel: 07 3897 5700

Fax: 07 3283 1168

ecb@ecb.com.au www.ecb.com.au

29 Snook St
Clontarf QLD 4019
Australia

Po Box 122
Margate QLD 4019
Australia

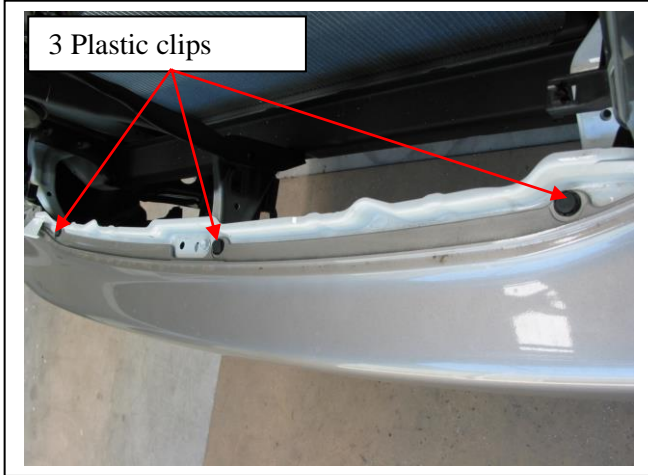


Figure 1

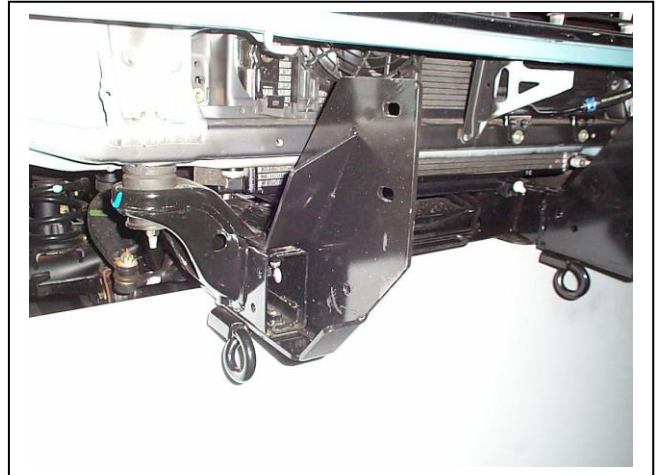


Figure 2 – Drivers side shown

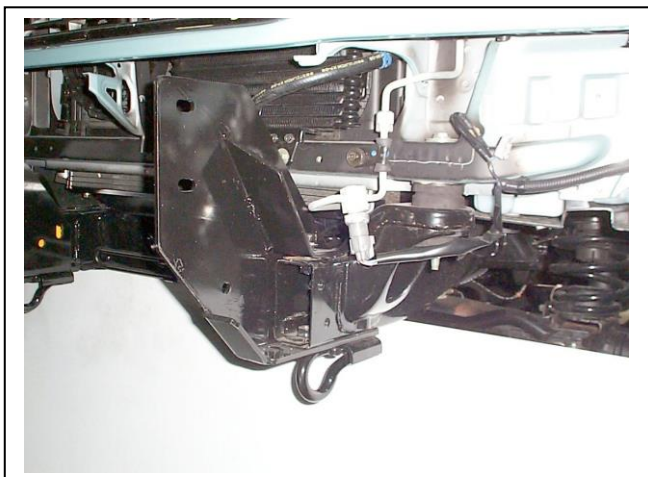


Figure 3 – Passenger side shown

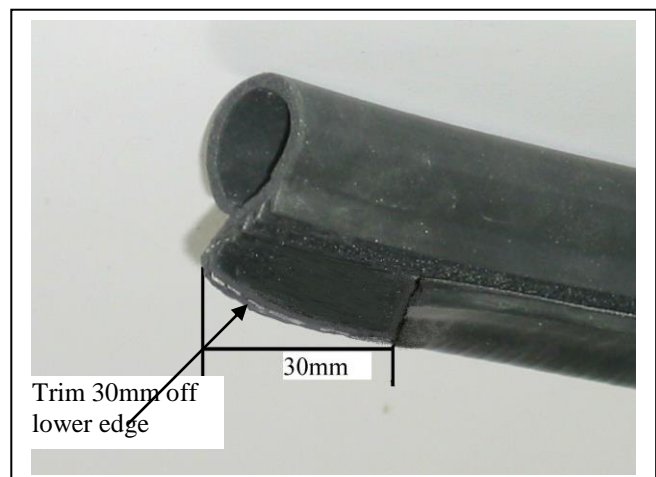


Figure 4

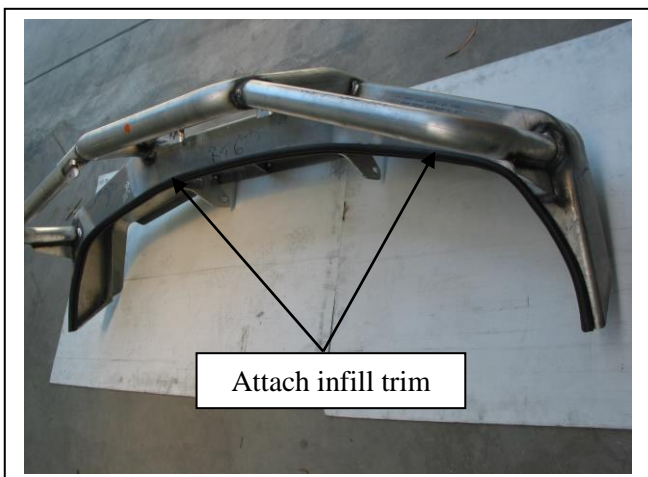


Figure 5

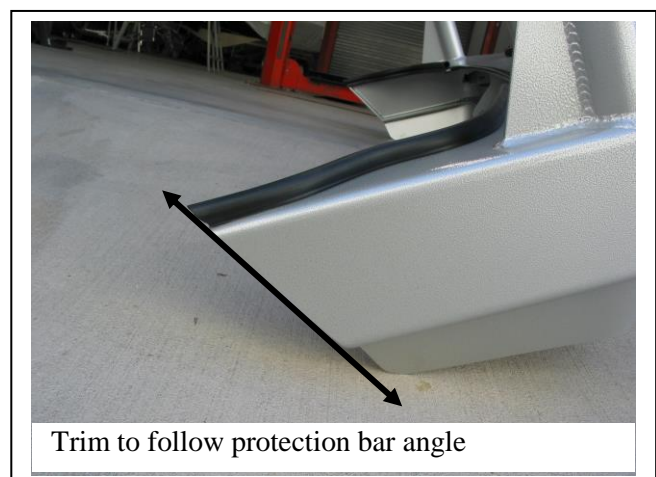


Figure 6

Note: Example only angle on bar maybe different to the above



East Coast Bullbars (ECB Pty Ltd)

Tel: 07 3897 5700

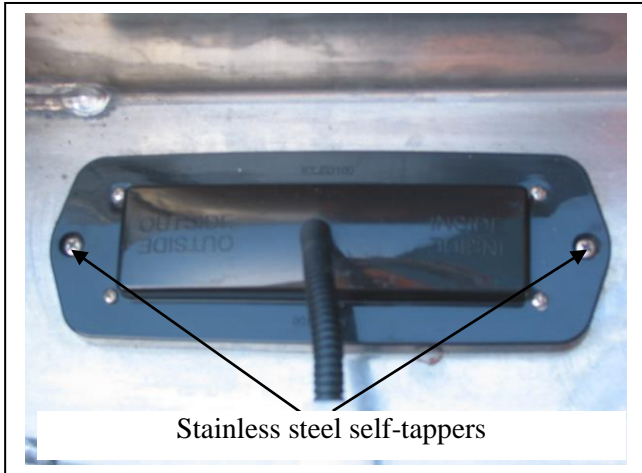
Fax: 07 3283 1168

ecb@ecb.com.au www.ecb.com.au

29 Snook St
Clontarf QLD 4019
Australia

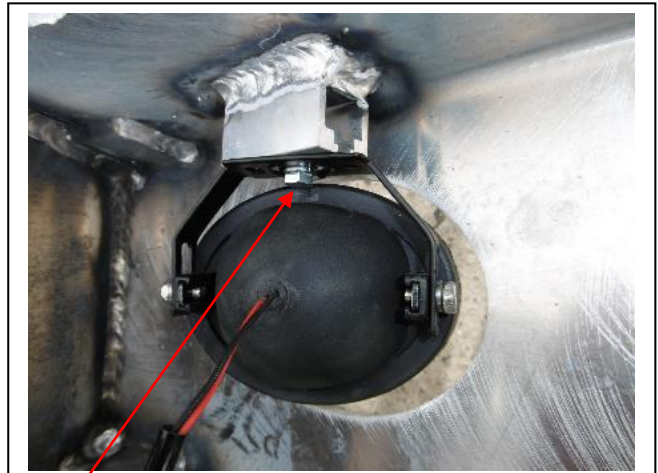
Po Box 122
Margate QLD 4019
Australia

WORLD'S BEST
ALLOY BULLBARS



Stainless steel self-tappers

Figure 7



M6 bolt

Figure 8



Infill trim

Figure 9



**WORLD'S BEST
ALLOY BULLBARS**

East Coast Bullbars (ECB Pty Ltd)

Tel: 07 3897 5700

Fax: 07 3283 1168

ecb@ecb.com.au www.ecb.com.au

29 Snook St
Clontarf QLD 4019
Australia

Po Box 122
Margate QLD 4019
Australia

We value your comments

Dear Fitter,

ECB would like to know how you went with the installation of this product. We value your comment and may need to contact you to clarify some details so please complete your contact details clearly.

We would appreciate if you could complete as many of the following details as possible.

| | |
|-------------------------------|----------------------------------------------------------|
| Your Name: | Your contact No. |
| Product Part No. | Product Invoice No. |
| Product Description: | Make, model, and year of vehicle: |
| Product Work Order No. | Company your from/Company product purchased from: |

Date of fitment: ____/____/____

Was the fitting hardware supplied complete?

Yes

No

If no what was not supplied

Did the installation go well?

Yes

No

Please provide comments

Please draw diagrams if you need to.

Post to
Reply Paid 122
PO Box 122
Margate QLD 4019

Fax to
(07) 3283 1168



**WORLD'S BEST
ALLOY BULLBARS**

East Coast Bullbars (ECB Pty Ltd)

Tel: 07 3897 5700

Fax: 07 3283 1168

ecb@ecb.com.au www.ecb.com.au

29 Snook St
Clontarf QLD 4019
Australia

Po Box 122
Margate QLD 4019
Australia



WORLD'S BEST
ALLOY BULLBARS

East Coast Bullbars (ECB Pty Ltd)

Tel: 07 3897 5700

Fax: 07 3283 1168

ecb@ecb.com.au www.ecb.com.au

29 Snook St
Clontarf QLD 4019
Australia

Po Box 122
Margate QLD 4019
Australia

DESPATCH CHECKLIST BT101SY

ICZBKCT101



| | |
|--------------|--|
| Work Order # | |
| Finish: | |
| Transport: | |
| Due Date: | |

- 2 – Steel mounting brackets.
- 1 – Bolt Kit.
- 1 – ECB LED Indicator / Park light kit.
- 1 – Pair ECB Fog lights.
- 4 – Fog lights surrounds.
- 1 – 2500mm length 6mm black infill trim.
- 2 – ECB Overriders – **Fitted to Bar**
- 3 – 6mm Air scoops – **Fitted to Bar**

**See other side of
this page for
photos of all
mounts**



Is this product “the best it can be” Yes _____ / _____
Wrapper’s initials / Checker initials

If NO fix before continuing

All parts checked and completed by:

Nut and bolts: _____ Date ___/___/___

Order control: _____ Date ___/___/___

Final wrap check: _____ Date ___/___/___



**WORLD'S BEST
ALLOY BULLBARS**

East Coast Bullbars (ECB Pty Ltd)

Tel: 07 3897 5700

Fax: 07 3283 1168

ecb@ecb.com.au www.ecb.com.au

29 Snook St
Clontarf QLD 4019
Australia

Po Box 122
Margate QLD 4019
Australia

